

# LOIS LAMBERT GALLERY SARAH STEINBERG

at Bergamot Station  
2525 Michigan Ave E3  
Santa Monica, CA 90404  
loislambertgallery.com

## FOR IMMEDIATE RELEASE

Contact: Lois Lambert, Director  
Lois@loislambertgallery.com  
Isabella DiPietro, Assistant Director  
Isabella@loislambertgallery.com  
310.829.6990

## *And Miles to Go Before I Sleep*

November 13, 2021 – January 8, 2022

Opening Reception Saturday, November 13, 6-9pm

---

SANTA MONICA, CA – Lois Lambert Gallery will be exhibiting Sarah Steinberg's upcoming show *And Miles to Go Before I Sleep* opening November 13th, 2021.

In her visceral oil landscapes of her childhood in Ontario, artist Sarah Steinberg captures her feeling of home, in whichever form is most truthful to her.

Steinberg's work is both exacting and emotional. She never strays from her source material, often photographs of trees she's taken from the scenery she calls home. In this way, Sarah is diligently focused on capturing the indelible impression her home has made on her. Her depictions of these scenes are, however, anything but photo-realistic. She is true not only to the images of the trees themselves, but more profoundly in the feeling they evoke in her: "I want to find ways to paint something that feels real without necessarily looking real."

One can fundamentally see Steinberg's work only in partial view. Many of these paintings are an expression of Steinberg's most personal and tender feelings, we can only glimpse the full meaning enshrouded in each one. Their power exists in this inequality of viewing. Sarah revisits the connection she has to her home in Ontario with the expressiveness only homesickness can provide.

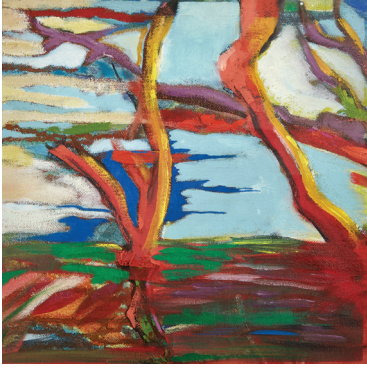
"I'm just painting to express my love of this place," says Steinberg. Each painting is a tribute to the landscape of Sarah's youth. As Steinberg's work evolves, she seeks new ways to represent the truth of her experience. In this exhibition, she describes her approach as softer and less impulsive. She employs the use of her handmade stencils etched from photographs of trees she's seen on the north shore of Lake Superior.



*A Wilderness Station*, oil on canvas, 5' x 7'



*The Color When The Spring is Born*, oil on canvas, 40" x 40"



*Excentric Orbit*, oil on canvas, 19" x 19"

Sarah's work is deeply influenced by the Algonquin School where a group of Canadian artists called the "Group of Seven," specialized in landscape paintings from 1920 to 1933. In using this material, Steinberg speaks to the timelessness of home, the inalterable nature of the feeling in her heart and hands; "it's all happening at once." Wherever she may be, impervious to time's arrow, Steinberg never strays too far from home.

Sarah Steinberg currently resides in California. She credits teachers Tom Wudl, Renata Zerner, and Keith Finch as formative in her evolution as a painter. This will be her fourth exhibition at Lois Lambert Gallery.