

LOIS LAMBERT GALLERY **Daveed Shwartz** "Shifting Perspectives: Through the Eye of the Artist"

at Bergamot Station
2525 Michigan Ave E3
Santa Monica, CA 90404

FOR IMMEDIATE RELEASE

Contact: Fiona Bertic-Cohen
Assistant Director
Fiona@loislambertgallery.com
310.829.6990

December 5, 2020 – January 23, 2020

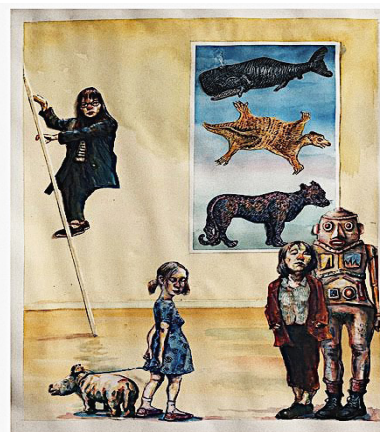
Zoom Reception Saturday, December 5th: 4-6pm and Gallery Appointments: 6-8pm



"Playing with Demons", Acrylic and Oil pastels on paper, 22.5"x30"



"The view from the floor", Acrylic and watercolor on paper, 28"x21"



"Bio Diversity Show #2", Acrylic and watercolor on paper, 22"x30"

SANTA MONICA, CA -- Daveed Shwartz's exhibition "*Shifting Perspectives: Through the Eye of the Artist*" opens Saturday, December 5th, 2020 at Lois Lambert Gallery. A zoom walkthrough will take place from 4-6pm and the exhibition will be open by appointment only from 6-8pm. This exhibition features painted works influenced by politics, religion and the history of art. Shwartz finds inspiration for his characters from Czech animator Jan Švankmajer, Japanese animator Hayaho Miyazaki and German Expressionist painters including Max Beckmann and Otto Dix.

Daveed doesn't wait for inspiration to strike. Instead, he dedicates every morning to spending time with his sketchbook in his studio. The idea of being bound to a certain medium is not of interest to him. Instead, he experiments with non-traditional materials including aluminum, cardboard, and cereal boxes, as well as more traditional materials like paper and canvas. During his time in quarantine, Shwartz ran out of materials to paint on, so he used cereal boxes as his canvas. "I let myself be pulled by the process and enjoy the discovery. There is not much thinking, it is rather a visceral experience for me. I follow my heart". As the son of a Holocaust survivor and an immigrant, Shwartz has encountered moments of trauma and despair. However, as a father and artist he has experienced moments of great joy. The parallels of pain and joy throughout his life fuel his art, and ultimately keep him grounded.

This exhibition "*Shifting Perspectives: Through the Eye of the Artist*", is about the relationship between artists, their work and the viewer. Daveed, in this series, started with portraits of famous writers and artists but this quickly turned into portraits of people in front of famous works of art in various museums. He then began painting artists he imagined with their imagined work. To add to this idea of the imaginary, Shwartz scrolled through the archives of the Biodiversity Heritage Library. Many of the images he found were fairytale species that were then incorporated into his pieces.



"In Front of Study of Baboons",
Watercolor on paper, 15"x20"



"The Biodevrsity Show #1 ",Watercolor
on paper, 22" x 30"



"The Biodevrsity Show #3 ",Watercolor
on paper, 22" x 30"

When asked about his work, Daveeed stated "I wish to invoke an emotional response and I hope to create a dialogue between the art and the viewer". When looking at his pieces, what is most noticeable are the faces of his characters. Shwartz demonstrates his ability to create a connection between his art and the viewer through the raw emotion emanating from the painted characters. His artwork doesn't just comment on the human predicament but also creates a sense of escapism. All of his work is open for interpretation.

Daveed Shwartz is a self-taught traditional painter with a long gallery and museum history. He has shown in London, Los Angeles, Brazil and New York. Furthermore, Shwartz has shown in museums including Tate Modern, Friesland Museum and Skirball Museum. In addition to his artist background, Shwartz has worked in the movie industry as a model maker; building miniature models in the visual effect department. He focused on digital painting and concept painting. He has made art for various blockbuster movies including *The Fifth Element*, *The Day After Tomorrow*, *Kung Fu Panda*, *How to Train your Dragon* and *Moana*.